



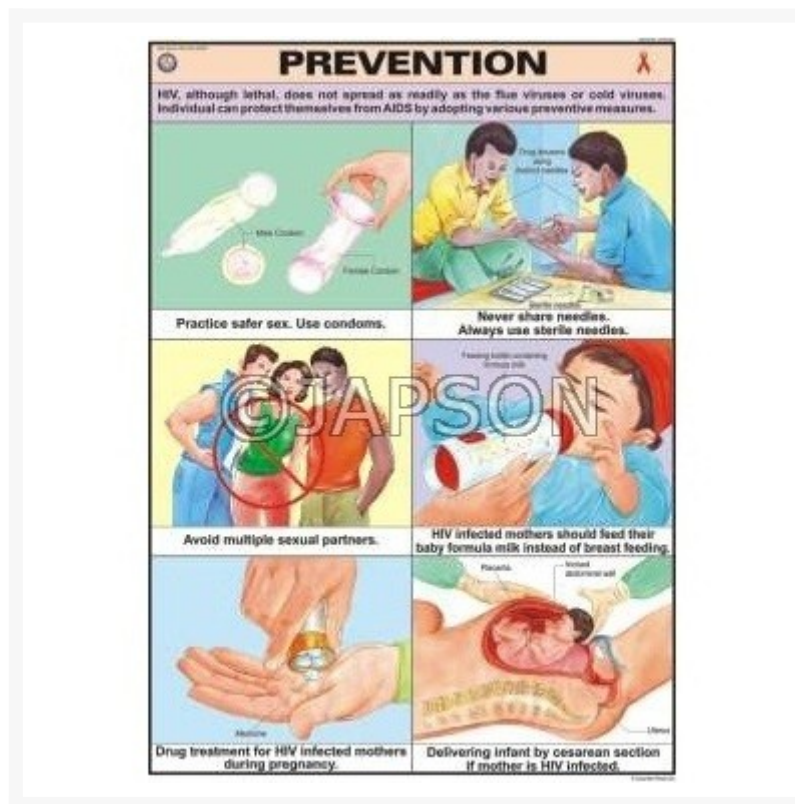
**Address:**  
**JAMBU PERSHAD & SONS**  
6275/22 Nicholson Road,  
Ambala Cantt, Haryana,  
INDIA  
Pin: 133001

**Email:**  
sales@japson.com  
japsonambala@yahoo.com

**Website:**  
www.japson.com  
**Phone:**  
+91-171-4006897

# Chart On Aids, School Education

## Product Image



## Description

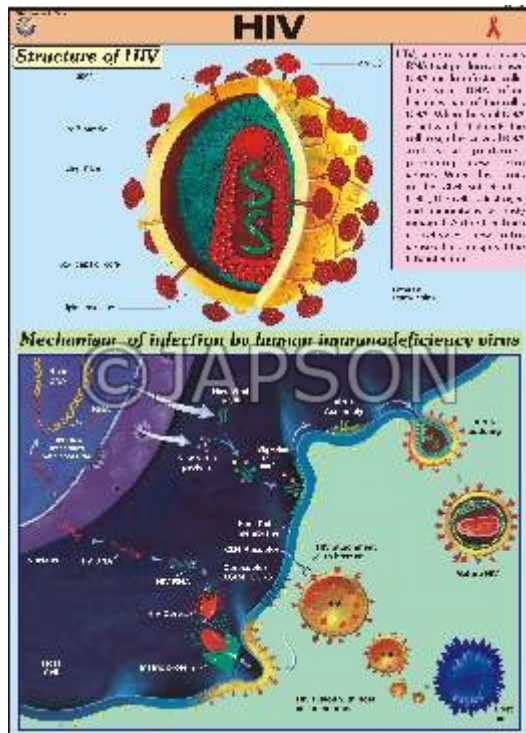
**Standard Size:** 70x100cms, Set of 8 Charts

**Language:** English

Synthetic Charts with Plastic Rollers. These charts have technically accurate and detailed description in vivid colours.

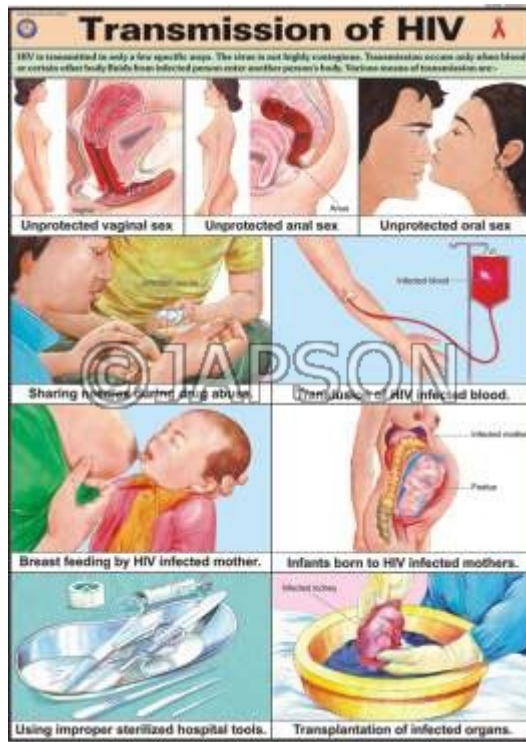
**Note:** Based on minimum order quantity conditions, Charts can be customized to your requirements in terms of CONTENT, LANGUAGE, SIZE, etc. Please write back to us for discussion.

A. Charts, HIV Prevention



D. Charts, How AIDS is not Transmitted

B. Charts, Transmission of HIV



E. Charts, Progress Of Infection

C. Charts,

F. Opportunistic

### HOW AIDS IS NOT TRANSMITTED

AIDS patients often face various types of discriminations because of several misconceptions widespread in the society. Also, these misconceptions unnecessarily create confusions in the minds of people. Therefore, everyone should have an accurate information about AIDS.



AIDS is not caused by mosquito/blood bite.



AIDS is not caused by touching or hugging.



AIDS is not caused by handshakes.



AIDS is not caused by studying with HIV positive.



AIDS is not caused by sharing public toilets.



AIDS is not caused by working with HIV positive.



AIDS is not caused by sneezing or coughing.



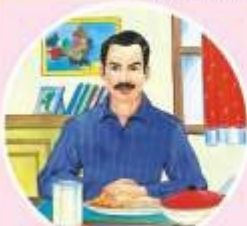

AIDS is not caused by sharing food.

### PROGRESS OF INFECTION

AIDS PROGRESSES THROUGH THREE DISTINCT PHASES: ACUTE PHASE, CHRONIC PHASE AND FULL-BLOWN AIDS.


#### 1. ACUTE PHASE

- HIV enters the body and begins reproducing itself.
- T4 cell count is high.
- The number of viruses rises rapidly.
- Antibodies to HIV begin to increase.
- Most patients show no symptoms during the first few months after infection. A few may exhibit symptoms similar to those of infectious mononucleosis - fever, chill, aches and swollen lymph nodes. However these symptoms vanish shortly thereafter.

#### 2. CHRONIC PHASE

- T4 cell count begins to fall.
- Antibodies to HIV begin to decline.
- Patients exhibit chronic, recurrent signs and symptoms: unexplained persistent fever, persistent cough, loss of memory, depression, diarrhea, difficulty in thinking and unexplained weight loss.




#### 3. FULL-BLOWN PHASE


- AIDS has been defined as occurring in a person who:
  - has a laboratory documented HIV infection.
  - has a CD4 count less than 200 cells per ml of blood.
  - has had one or more infections that wouldn't normally occur in a person with a healthy immune system.
- Persistent infections, some loss of weight and weakness.
- Infections that normally are not capable of producing serious infections, take hold and become life threatening.

### OPPORTUNISTIC DISEASES

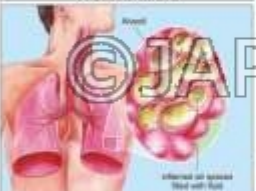
Multiple infections and cancer may develop because of the diminished immune response. Many of these infections are highly unusual in people with healthy immune systems. They are called opportunistic infections because they take advantage of a weakened immune system due to AIDS.




**KAPOSI'S SARCOMA**




**CANDIDIASIS**




**PNEUMOCYSTIS CARINII**



**LYMPHOMAS**



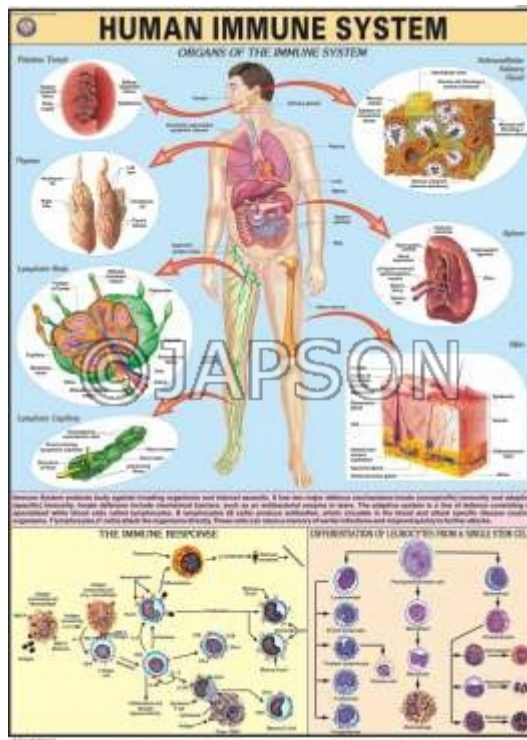
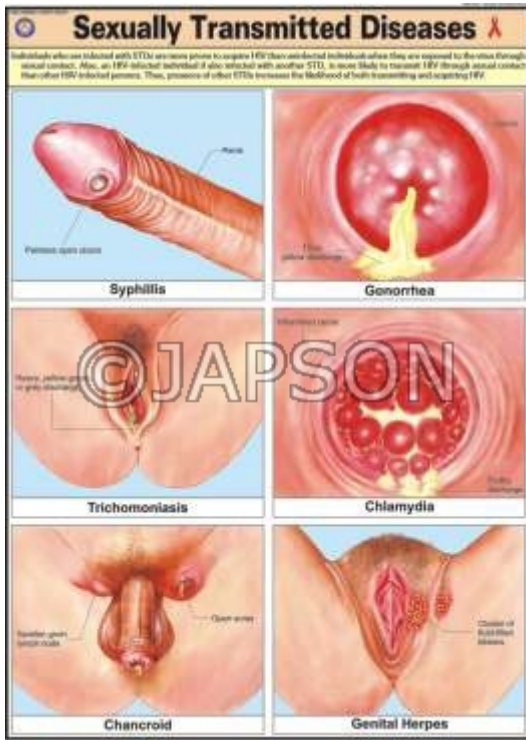
**CMV-INFECTION**



**HERPES SIMPLEX INFECTION**

G. Charts, Sexually Transmitted Diseases

H. Charts, Human Immune System



## Disclaimer

The Products details given on this page are indicative in nature and JAPSON reserves the right to change them without prior notice. Buyer is also requested to re-check the specifications and other features of product at the time of order as product development is a continuous process and minor modifications may be made to design based on latest availability, process and design.