



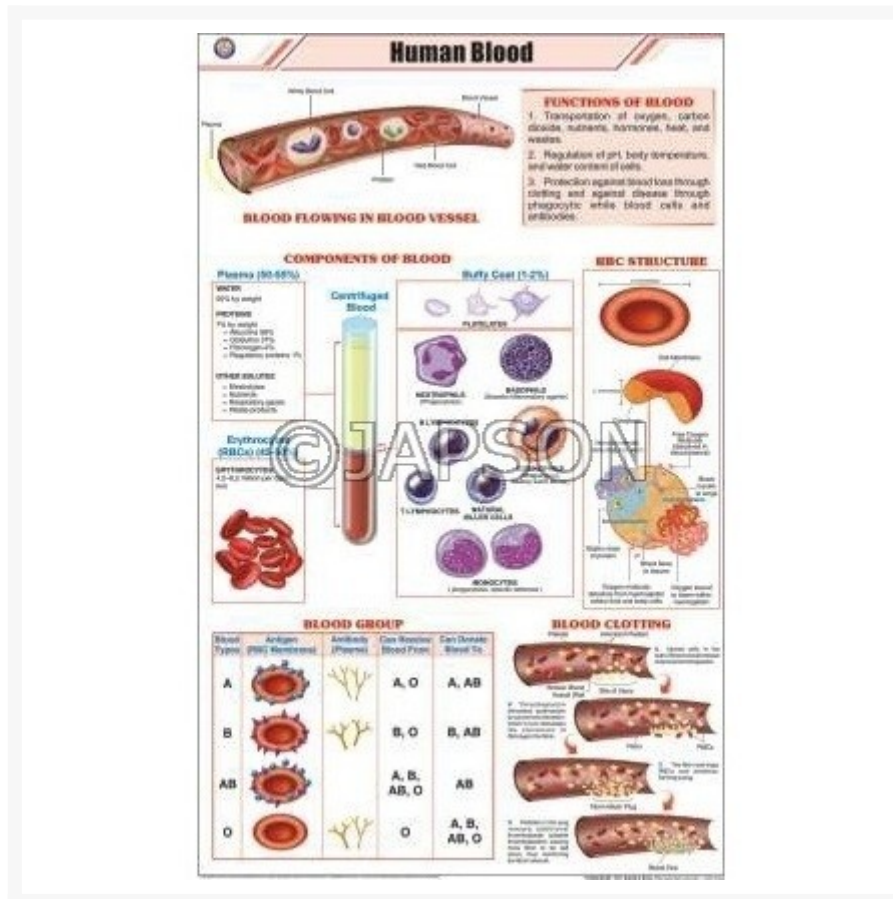
**Address:**  
**JAMBU PERSHAD & SONS**  
6275/22 Nicholson Road,  
Ambala Cantt, Haryana,  
INDIA  
Pin: 133001

**Email:**  
sales@japson.com  
japsonambala@yahoo.com

**Website:**  
www.japson.com  
**Phone:**  
+91-171-4006897

# Human Body Charts, Zoology, School Education

## Product Image



## Description

**Standard Size:** 58x90cms

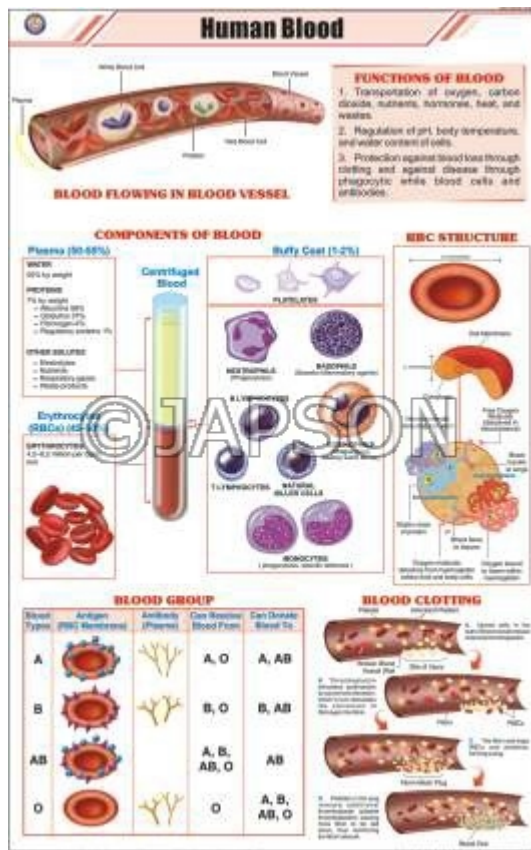
**Language:** English

Laminated Paper Charts with Plastic Rollers. These Charts have technically accurate and

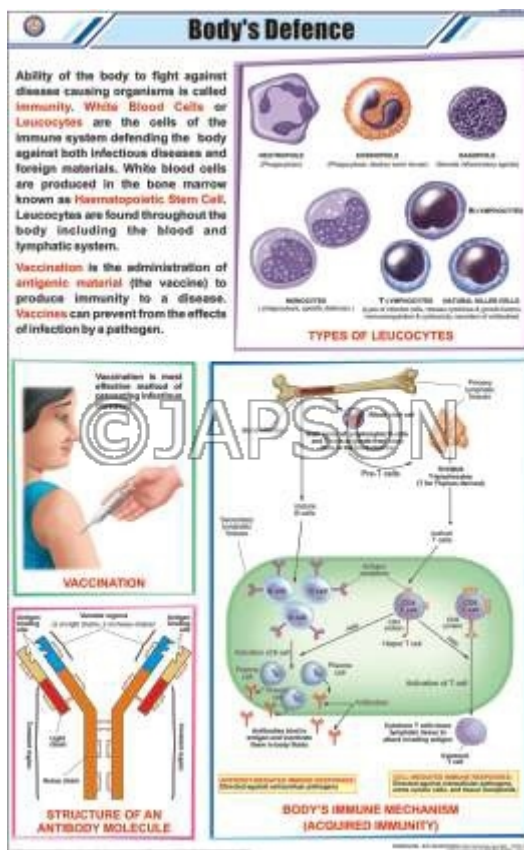
detailed description in vivid colours.

**Note:** Based on minimum order quantity conditions, Charts can be customized to your requirements in terms of CONTENT, LANGUAGE, SIZE, etc. Please write back to us for discussion.

A. Chart, Human Blood

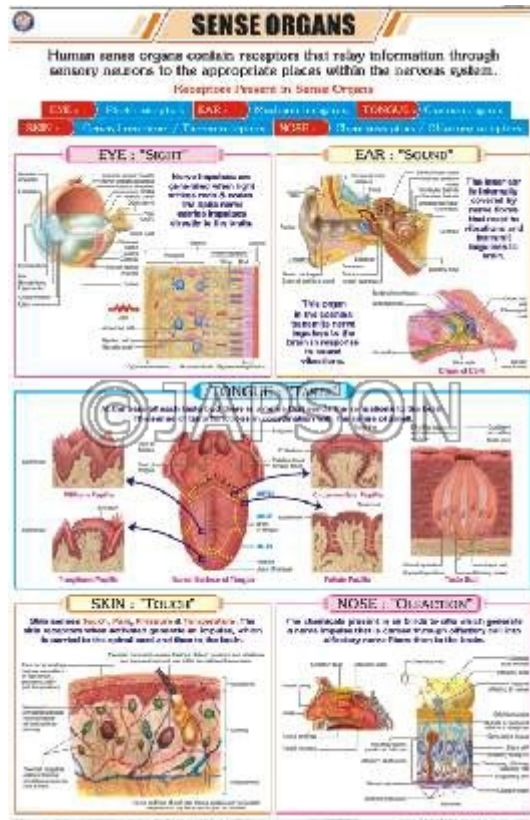
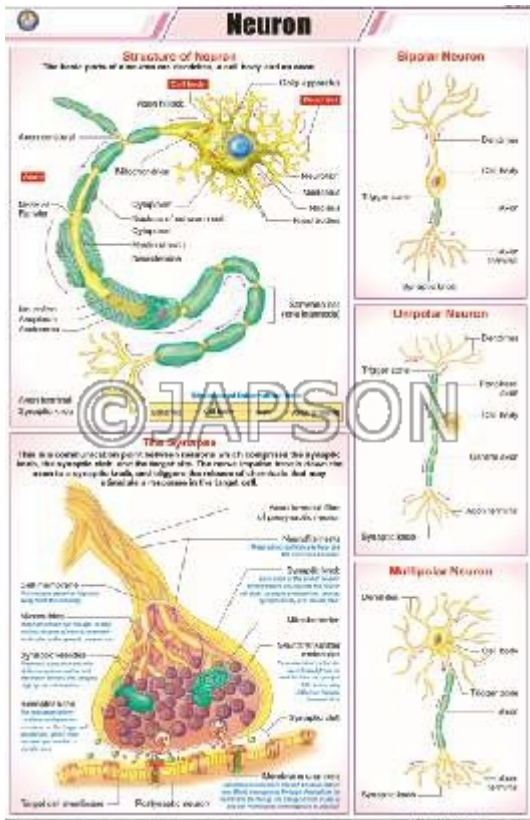


B. Chart, Body's Defence

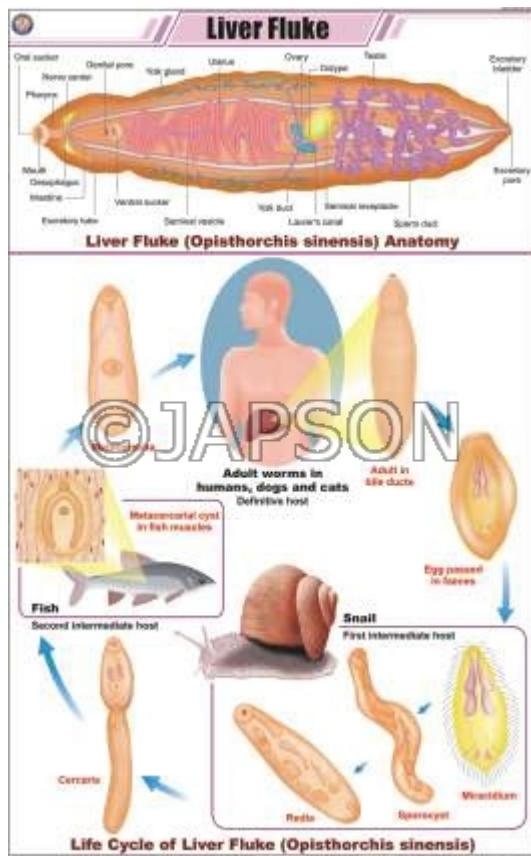


D. Chart, Neuron

E. Chart, Sense Organs



## F. Chart, Liver Fluke



## Disclaimer

---

The Products details given on this page are indicative in nature and JAPSON reserves the right to change them without prior notice. Buyer is also requested to re-check the specifications and other features of product at the time of order as product development is a continuous process and minor modifications may be made to design based on latest availability, process and design.