



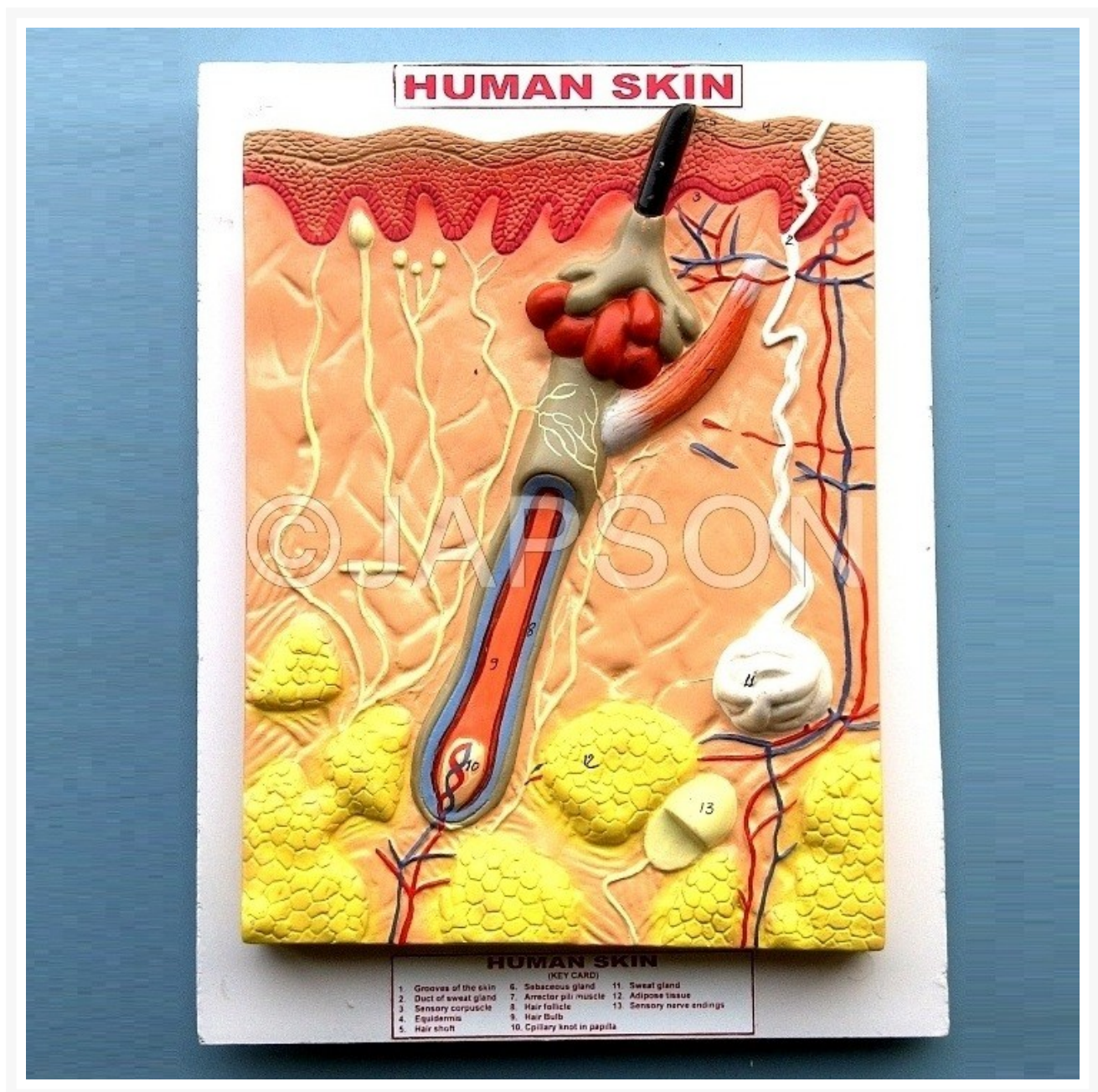
Address:
JAMBU PERSHAD & SONS
6275/22 Nicholson Road,
Ambala Cantt, Haryana,
INDIA
Pin: 133001

Email:
sales@japson.com
japsonambala@yahoo.com

Website:
www.japson.com
Phone:
+91-171-4006897

Human Model, Skin

Product Image



Description

This 3 layer model shows the hair covered skin of the head representing hair follicles with sebaceous glands, sweat glands, receptors, nerves and vessels. Mounted on a base, appropriately coloured and numbered with key card.

Sizes available:

- 16x12 inches

- 13x10 inches

| Particulars | Catalog No. |
|--------------------|--------------------|
| Human Model, Skin | JZ01530 |

A quality product from JAPSON ideal for use in School Laboratories in developing countries of Asia, Africa and South America.

Standard specifications for school laboratory use. Ideal mix of Quality and Economy.

Other configurations and superior quality available for specific use or for developed countries.

Disclaimer

The Products details given on this page are indicative in nature and JAPSON reserves the right to change them without prior notice. Buyer is also requested to re-check the specifications and other features of product at the time of order as product development is a continuous process and minor modifications may be made to design based on latest availability, process and design.