



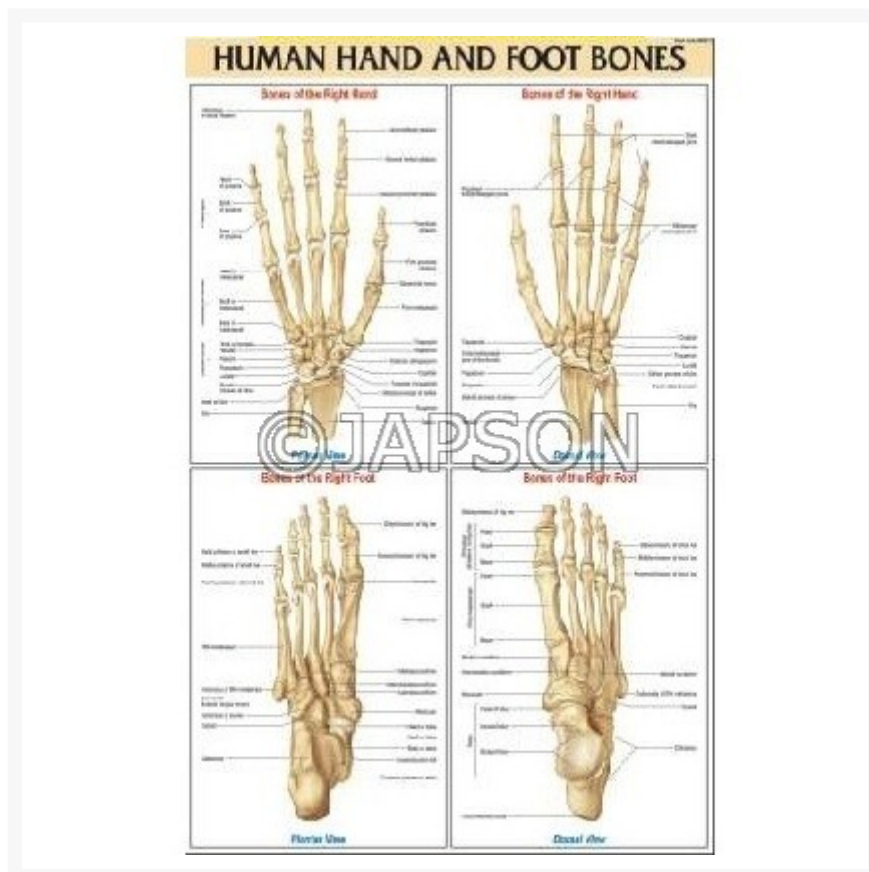
**Address:**  
**JAMBU PERSHAD & SONS**  
6275/22 Nicholson Road,  
Ambala Cantt, Haryana,  
INDIA  
Pin: 133001

**Email:**  
sales@japson.com  
japsonambala@yahoo.com

**Website:**  
www.japson.com  
**Phone:**  
+91-171-4006897

# Medical (Nursing) Charts-I, School Education

## Product Image



## Description

**Standard Size:** 51x66cms

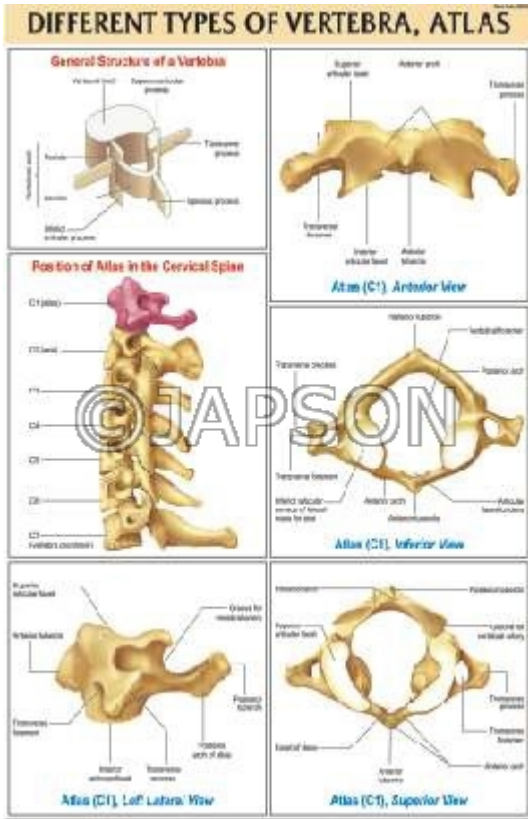
**Language:** English

Laminated, Rigid and Flexible Charts with Plastic Rollers. These Charts have technically accurate and detailed description in vivid colours.

**Note:** Based on minimum order quantity conditions, Charts can be customized to your requirements in terms of CONTENT, LANGUAGE, SIZE, etc. Please write back to us for discussion.

A. Charts, Different Types of Vertebra, Atlas

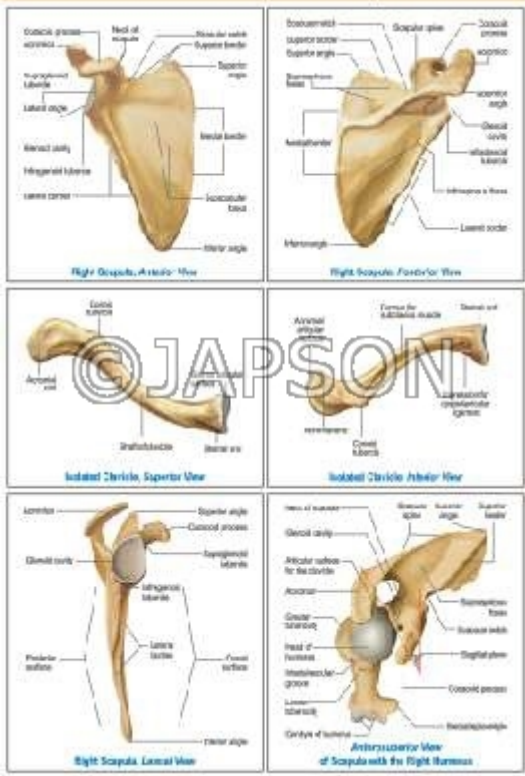
B. Charts, Different Type of Vertebra, Axis



C. Charts, Different Types of Bones, Scapula

D. Charts, Different Types of Joints

### DIFFERENT TYPES OF BONES, SCAPULA



### DIFFERENT TYPES OF JOINTS



E. Charts, Human Hand And Foot Bones

F. Charts, Different Types of Vertebra, Lumbar

### HUMAN HAND AND FOOT BONES

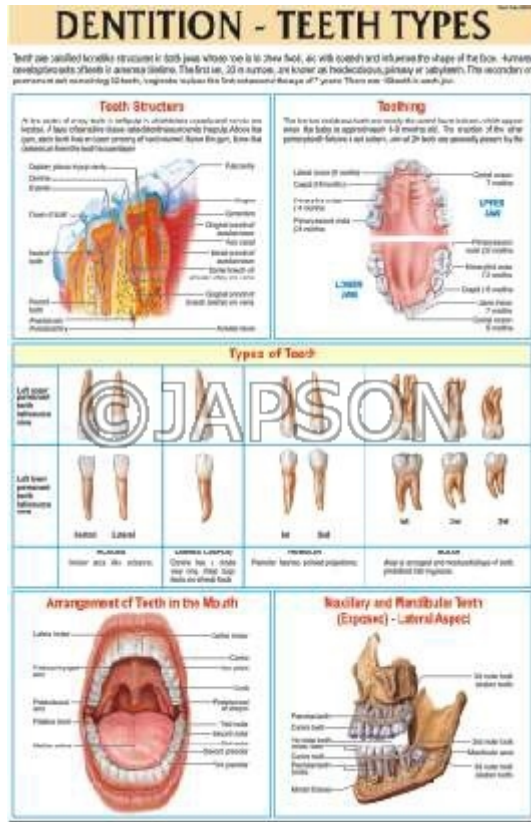
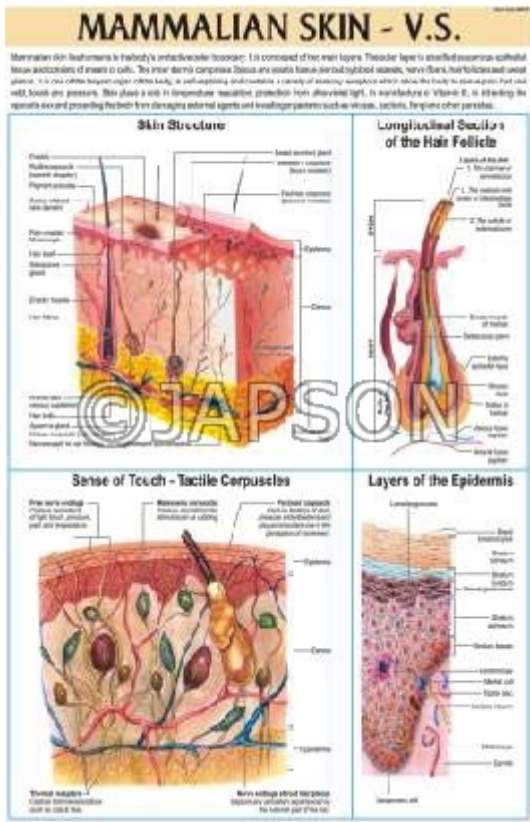


### DIFFERENT TYPES OF VERTEBRA, LUMBAR



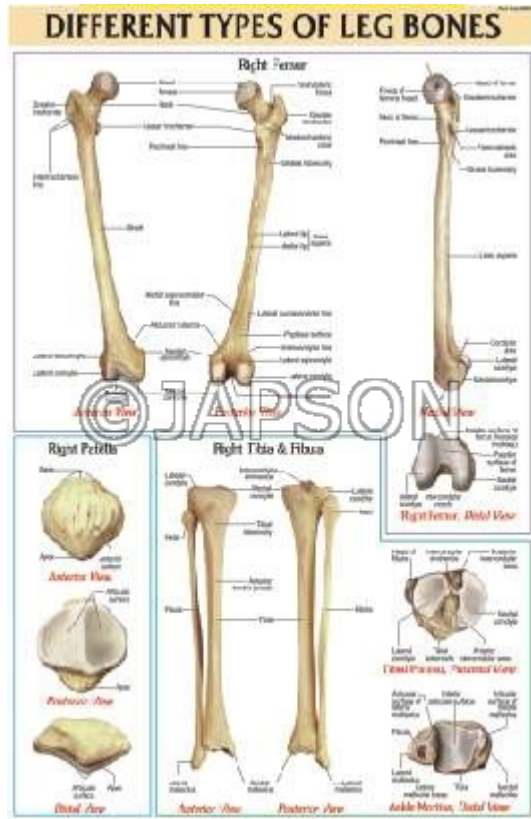
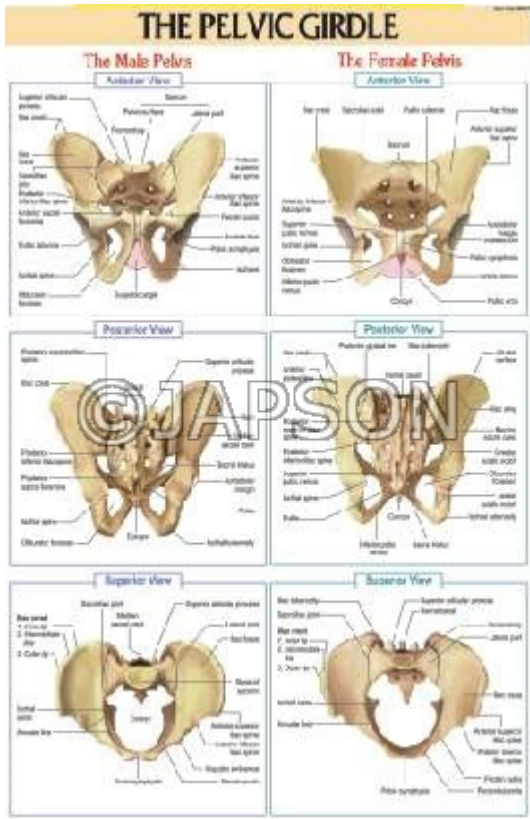
G. Charts, Mammalian Skin - V. S.

H. Charts, Dentition - Teeth Types



I. Charts, The Pelvic Girdle

J. Charts, Different Types of Leg Bones



K. Charts, Pelvic Ligaments

L. Charts, Different Types of



O. Charts, Ligaments of Lower Limb P. Charts, Ligaments of Upper Limb



Q. Charts, Ligaments of Spinal Column

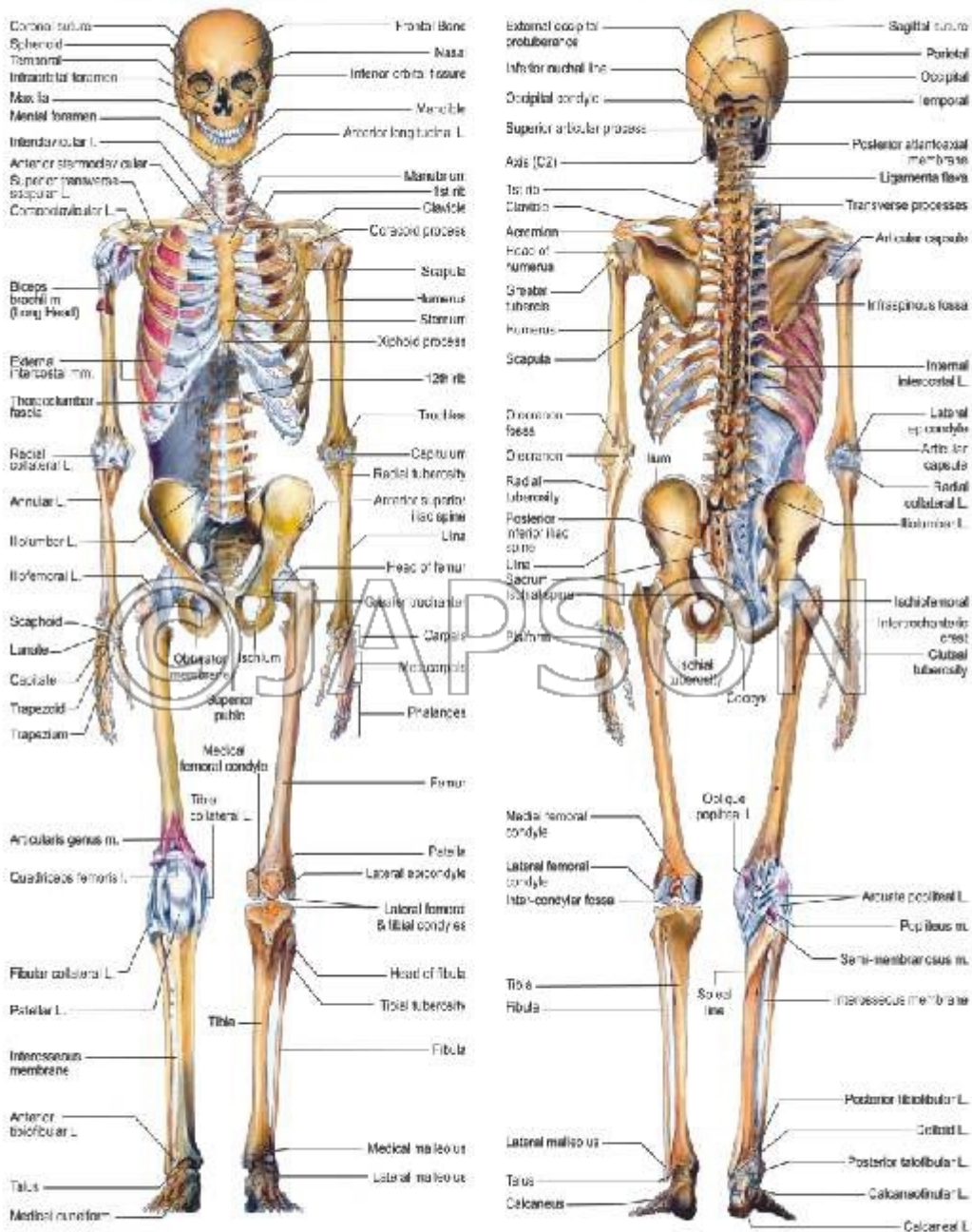


R. Charts, Human Skeleton

# HUMAN SKELETON

## Anterior View

## Posterior View



### Skeletal System

Skeleton is a flexible structure of rigid bones which provide shape, movement and support to the body and offer protection to the internal organs. The rigid bones lie buried within the muscles and other soft tissues. Movement is only possible because of the way bones are joined to one another in joints and the way muscles are attached to those bones. On an average there are 206 bones of various shapes and sizes in an adult human skeleton.

## Disclaimer

The Products details given on this page are indicative in nature and JAPSON reserves the right to change them without prior notice. Buyer is also requested to re-check the specifications and other features of product at the time of order as product development is a continuous process and minor modifications may

be made to design based on latest availability, process and design.