



**Address:**  
**JAMBU PERSHAD & SONS**  
6275/22 Nicholson Road,  
Ambala Cantt, Haryana,  
INDIA  
Pin: 133001

**Email:**  
sales@japson.com  
japsonambala@yahoo.com

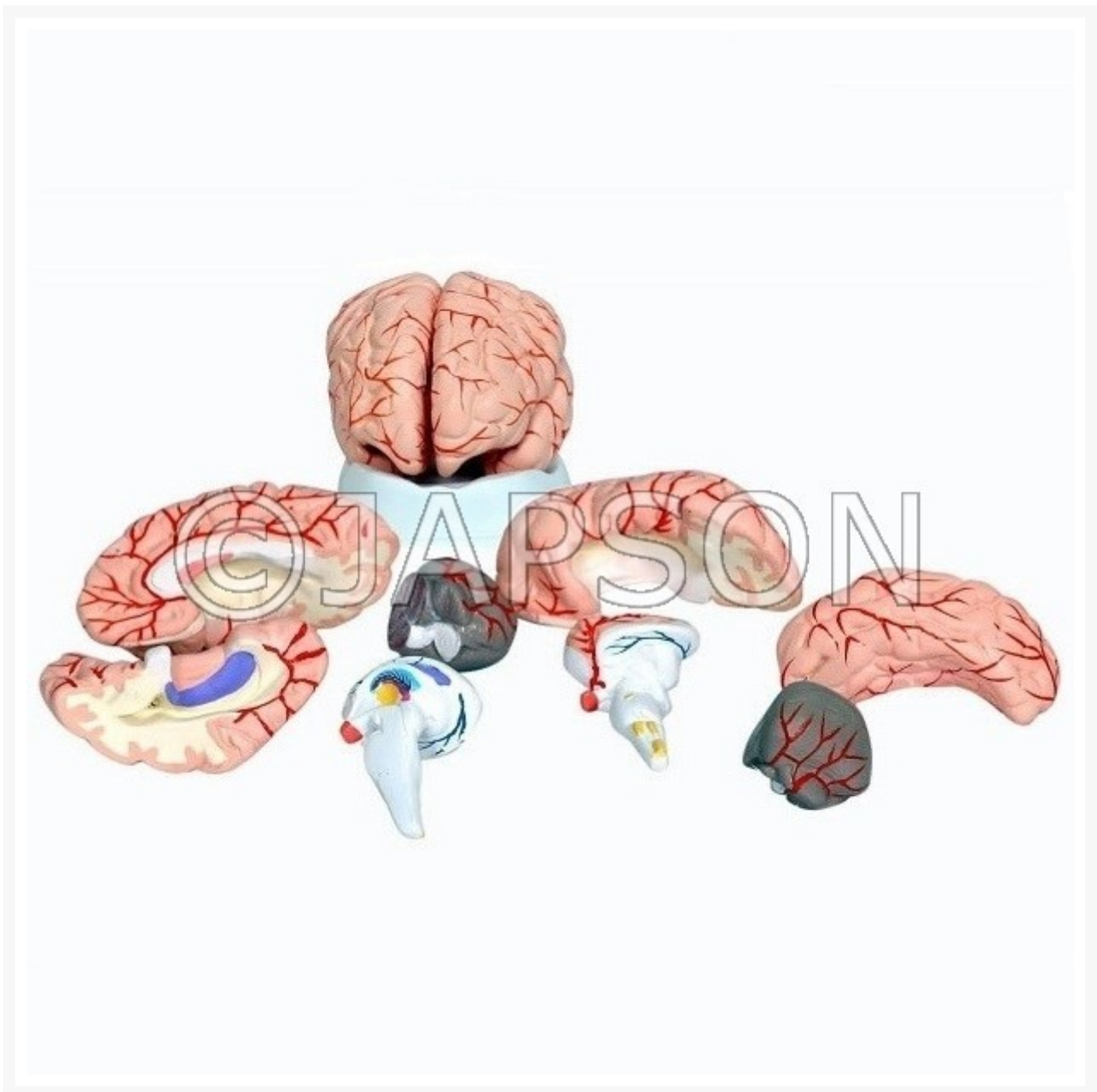
**Website:**  
www.japson.com  
**Phone:**  
+91-171-4006897

---

# Model, Human Brain

## Product Image

---



## Description

---

### Design Specifications:

1. Life-size, made of non-toxic plastic material.
2. The model can be disassembled into 8 parts:
  - a. 4 cerebrum parts (temporal, occipital lobes, frontal and parietal lobes);
  - b. 2 brain stem parts (right and left);
  - c. 2 cerebellum parts (right and left)
3. Shows Thalamus, Pituitary gland, Hypothalamus and Pons.
4. Color markings on the brain model illustrate arteries (red) and veins (blue), cranial nerves (yellow), along with the cortex (pink) and medulla fiber (white).
5. The model rests in a plastic base.
6. Dimension (min.): 19 cm x 15 cm x 13cm.

-  
Model, Human Brain

**Catalog No.** DEPD002

## Disclaimer

---

The Products details given on this page are indicative in nature and JAPSON reserves the right to change them without prior notice. Buyer is also requested to re-check the specifications and other features of product at the time of order as product development is a continuous process and minor modifications may be made to design based on latest availability, process and design.