



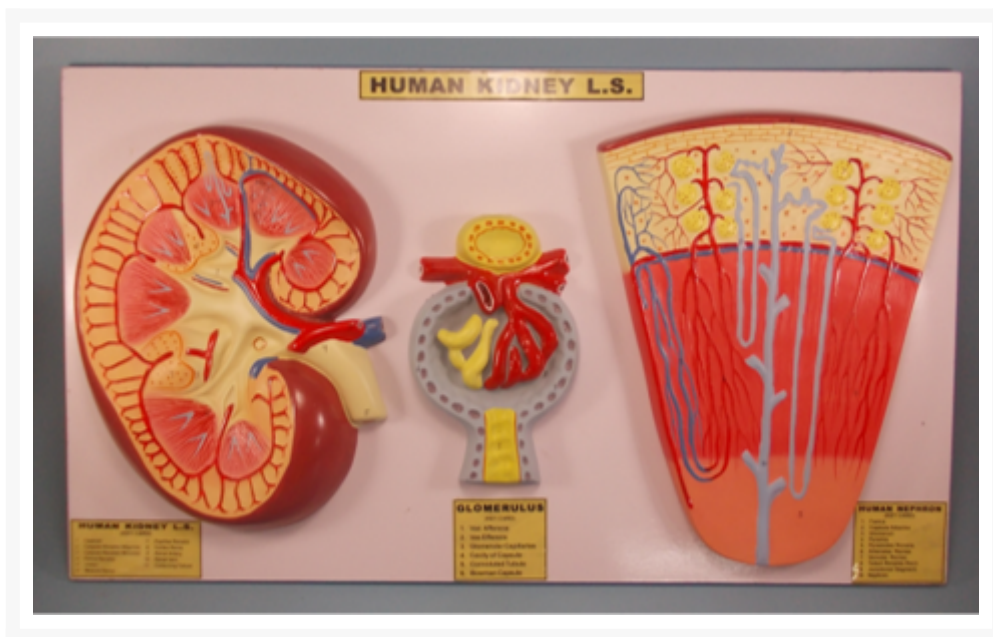
Address:
JAMBU PERSHAD & SONS
6275/22 Nicholson Road,
Ambala Cantt, Haryana,
INDIA
Pin: 133001

Email:
sales@japson.com
japsonambala@yahoo.com

Website:
www.japson.com
Phone:
+91-171-4006897

Model of Nephron in kidney

Product Image



Description

The frontal section of the kidney model showing the structure of nephron, glomerulus and henle loop. The second model of the nephron shows the renal tubules, glomeruli with arterioles and collecting tube. The third model of a glomerulus shows the Bowman capsule, afferent and efferent arterioles, capillaries and podocytes. Mounted on a base, appropriately coloured and numbered with key card.

Catalog No.	Particular
103020	Model of Nephron in kidney

Disclaimer

The Products details given on this page are indicative in nature and JAPSON reserves the right to change

them without prior notice. Buyer is also requested to re-check the specifications and other features of product at the time of order as product development is a continuous process and minor modifications may be made to design based on latest availability, process and design.